



## PRESS RELEASE

### World premiere for three new and unique DDS modules at *Light + Building 2010*

#### DDS launches a new version of DDS-CAD that includes three brand new and unique modules

Data Design System (DDS) presents three new product components and launches a new version of their successful planning tool *DDS-CAD MEP* at the forthcoming *Light + Building exhibition*. DDS can be found in Hall 8.0, Stand B 77 in addition to the DDS information counter at the ZVEH stand. The specialists in building technology planning software solutions brings *DDS-CAD PV*, *DDS-CAD Lightning* and *DDS-CAD ProfiTest* - three completely new and unique solutions to Frankfurt. Furthermore, the new generation - now version 7 - of the flagship *DDS-CAD MEP* will be presented at the exhibition.

#### **DDS-CAD PV**

Solar energy specialists should direct their attention particularly to *DDS-CAD PV*. With this solution, photovoltaic systems (roof-mounted, roof and facade installation as well as in open spaces) are professionally planned and visualized in high quality.

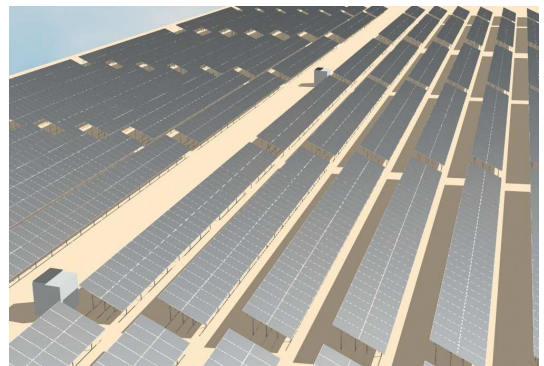
With a few mouse clicks, it allows the user to study the path of the sun at the installation site. Accurately modelling the shadows cast by adjacent objects using photorealistic 3D representation. This simulation can be animated in static single frames or as a movie sequence for any time period or date.

With comprehensive visualization options, *DDS-CAD PV* offers the user many ways of representing the simulation. "The possibilities of creating system documentation, particularly the creation of execution plans, makes *DDS-CAD PV* a tool that brings immense benefits for solar energy specialists," says Rainer Walser, PV Project Manager at DDS, and he adds: "An optional addition is the full functionality of the sophisticated Polysun software from our partner Vela Solaris".



As part of the Solar Simulation in *DDS-CAD PV*, shading is realistically represented from shading objects.

Source: Data Design System GmbH



*DDS-CAD* allows the design of solar PV systems, as shown here, in open spaces as well as in-roof, roof and facade installation.

Source: Data Design System GmbH



With the fully integrated plug-in, *Polysun Inside*, *DDS-CAD PV* is able to make precise yield calculations on the basis of global weather data for complete PV systems. An automatic mapping inverter and a comprehensive module and inverter database are other features that *Polysun* offers to the user.

The features of *DDS-CAD PV* are made possible through cooperation with one of the leading providers of solar simulation software, the Swiss company, Vela Solaris. Managing Director of DDS Germany - Nils Kverneland - sees in this cooperation an important step for the development of *DDS-CAD PV*: "Our solution has been expanded with the involvement of the *Polysun plug-in* to a major new branche. The partnership with Vela Solaris is ideal for the philosophy of DDS. In conjunction with *Polysun*, *DDS-CAD* now has a new unique selling point. This makes our software a more valuable planning tool for any solar energy specialist".

**DDS-CAD Lightning**

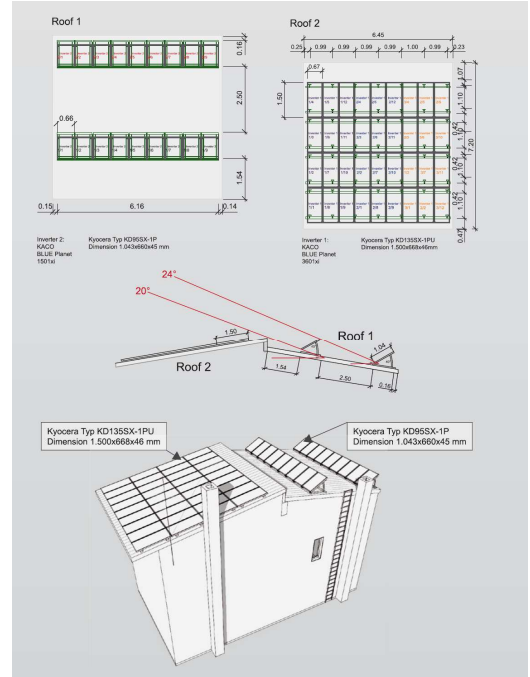
For the second product innovation, *DDS-CAD Lightning*, the existing *DDS-CAD* capabilities of planning 3D lightning were intensively redeveloped and significantly expanded. On the subject of this new development, Nils Kverneland says: "The newly integrated capabilities such as automatic altitude and surface recognition work really easy and are ideal for our users. They can easily process very complex projects with our solution. Creating a comprehensive three-dimensional lightning protection and earthing design fast, easy and secure."

According to DDS, research focused on customer needs and the cooperation with the lightning protection specialists Dehn + Söhne allowed many new dedicated tools and features to be integrated into the software. DDS Product Manager Heinz Wohlers points out: "In the Dehn + Söhne team we had a partner who is an absolute authority in the field with renowned practical experience. *DDS-CAD Lightning* leaves nothing to be desired with regard to the expertise and practical approach."

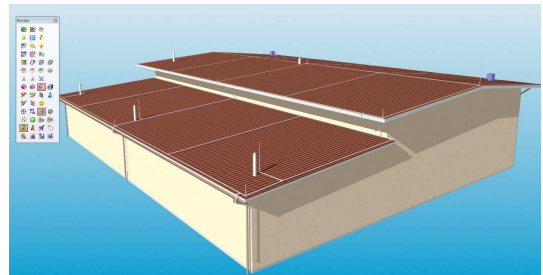
Through this collaboration, the Dehn productdata has been incorporated in the *DDS-CAD* database and will be available to all users for future planning projects.

**DDS-CAD ProfiTest**

Together with their partner and *Light + Building* stand neighbour, GMC-I Gossen Metrawatt, DDS presents a global innovation: The direct connection of test equipment to CAD software for the design and verification of electrical engineering.



*DDS-CAD PV* is a powerful tool for the documentation of PV systems, including the creation of execution plans. Source: Data Design System GmbH



*DDS-CAD Lightning* is the tool that enables users to effortlessly create and design lightning protection and earthing systems in 3D. Bron: Data Design System GmbH



Both companies have developed a method of communicating planning data from DDS-CAD directly into the universal testing device ProfiTest, a product produced by the company GMC-I. The necessary tests can be made on the basis of the transferred data. The data is modifiable in the unit if required. After testing, measured values and possible changes are transferred back to DDS-CAD and the data (distribution, RCDs and circuits) can be saved in the test protocol with the corresponding measured values. This way the hand-written test protocol is easily replaced, providing huge time savings for the user and increased safety as transmission errors are a thing of the past.

Particularly for those companies that want to use DDS-CAD in combination with the ProfiTest device, DDS has developed a new product called *DDS-CAD ProfiTest*. This successful DDS-CAD version has all the functions necessary to exploit the full potential of the interface.

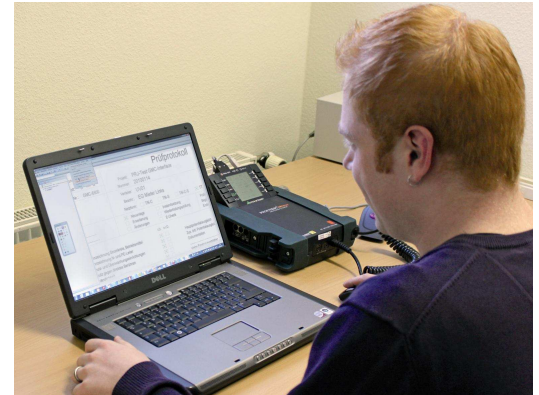
“*DDS-CAD ProfiTest* is an excellent addition for all companies that use professional testing equipment for verification”, declares Product Manager Heinz Wohlers, adding: “The time required for testing and editing protocols is reduced significantly and the potential efficiency will make many professionals able to breathe again.”

#### ***The new version: DDS-CAD Building 7***

At the basis of all three DDS product innovations is the core version of the new 7 Series generation of DDS’ main product *DDS-CAD MEP*. This new version of Europe’s most successful DDS product will be presented in detail to the visitors of the *Light + Building* exhibition.

Numerous integrated innovations, improvements and updates to the software make sure that it is worth getting to note that the basic functionality of the three new DDS products have been integrated in the DDS-CAD Electrical packages. DDS-CAD 7 will contain the basic functions for the planning and design of PV systems, lightning protection, and the interface to the ProfiTest. This means that companies already using DDS-CAD together with software maintenance are automatically receiving the upgrade to version 7 without additional costs.

But beyond this, the software has been updated and optimized. DDS CAD 7 has a powerful editor for circuit layouts. Allowing the user to create circuit templates and supplement the standard layouts contained in the library. Hereby significantly improving the individual distribution documentation. An important innovation in this regard is the



The direct exchange of data between DDS-CAD 7 and professional testing equipment significantly reduces time and increases the safety of inspections.

Source: Data Design System GmbH



possibility within circuit diagrams to copy and edit wiring schemes. Furthermore, the wiring schemes now have automatic connection points making editing even easier for users.

New designs of windows and door types are available for the creation of building models. Triangular windows, window walls, windows with oblique frames can now be integrated with a few mouse clicks in the plan drawing. A dynamic dimensioning system ensures the correct proportions of the planned components. In addition, gutters and downspouts can now be included in the planning also.

General functionalities have been further enhanced in DDS-CAD 7. The user is now able to directly control the display of separate layers in the underlying DWG drawing as well as in the DDS-CAD plan drawing. By simply clicking on the object, a layer is turned off. Turning it back on is just as easy: via a list, accessible by using the right mouse button.

Furthermore, in version 7 the user controls the line colors, width, and appearance in projects with "pens". The individual line parameters can thereby be changed at any time for any component in a simple step. With this function various "pen setups" can be created for different users or different purposes. These ensure that an identical design is presented by changing only the "pen set-ups". This feature increases the flexibility of plan presentation and also allows - even when editing a project with multiple users - taking into account the personal preferences of users.

To achieve flexibility in designing and further optimise the look and feel of the documentation, TrueType fonts are now also available. In addition to the default "Arial", various fonts are freely modifiable by the user.

Especially for those organizations who are planning on the basis of existing DWG plans DDS created a powerful intelligent 3D model developer. Transforming the two-dimensional extensions of a DWG file to an intelligent 3D building model has become utterly simple in version 7. Thanks to the automated intelligent space-detection, the software detects the rooms of the DWG plan including windows, doors and roomtexts quickly and easily. The detected information is used by DDS-CAD for the creation of a building information model (BIM). In this way, the user can rapidly create the basis for his planning in 3D.

"With our new phase of development, we continue in the winning manner that we have done with our successful



versions 6.4 and 6.5," concludes Nils Kverneland, adding: "Through the intensive dialogue with our users who provide the real driver for development, and the integration of the features they have suggested, we benefit our users in the best possible way. So I am very confident that we can be proud of our version 7, which sets new standards in terms of practicality, functionality and usability."

-----

The vendor: Data Design System GmbH

The name Data Design System stands since 25 years for precision, quality, innovation and inventiveness. DDS was founded in 1984 in Norway as a public company and is today one of leading software houses in Europe with over 13,000 workstations installed within their target audience. Planning offices, craft, building management, industrial enterprises and training facilities, the typical customers who benefit from the 25-year experience and the security of an international company with a solid financial base. The DDS-CAD software packages provide specifically for the design of electrical installations, automation, plumbing and heating, air conditioning and ventilation, and energy simulation of individual, modular system solutions with optimal price / performance ratio. The renewable energy sector is another priority.