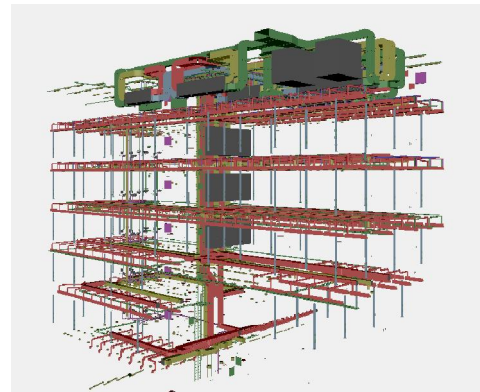




SL Plaza is a central landmark in the new Medical Business Park in Amsterdam. While beautiful, three futuristic towers indicate a progressive vision of the future with its modernized aluminum facades. With over 26.000 m² it is one of the biggest BuildingSMART projects currently in the world.

At the initiative of the architect (Michel Post Architects), Constructor (Pieters Bouwtechniek) and technical advisor (Veccins 3D) intensively collaborated in sharing 3D models via IFC, successfully deploying the BuildingSMART methodology. The integral use of a Building Information Model (BIM) in the design phase was an immediate success, enabling:

- Instant anticipation on client needs and local building conditions whilst designing.
- Quick insight into the consequences of numerous simultaneous changes of the entire virtual building team;
- Fewer people working more effectively meaning significant efficiency gains even during the design process.



SL Plaza's Technical installations designed in DDS

Diverse IFC compliant software packages were used in the designing phase; EliteCAD (architecture), Tekla Structures (construction), and DDS-CAD MEP (technical installations). These applications have gained a renowned reputation concerning their interoperability of exchanging IFC models.

Using DDS-CAD MEP for the technical installations was a logical choice while SL Plaza will accommodate several technology companies and laboratories, each having its own specific requirements on the indoor climate. Overall, BuildingSMART provides an efficient realization of the SL Plaza project concerning time and budget, but more importantly, it will ultimately enhance and optimize the comfort and productivity of end users.

Frits van Enk

Veccins 3D B.V.

W: www.veccins3d.nl

E: info@veccins3d.nl

T: +31 (0) 38 375 88 11